

Synthetic Event Discharge Hydrographs



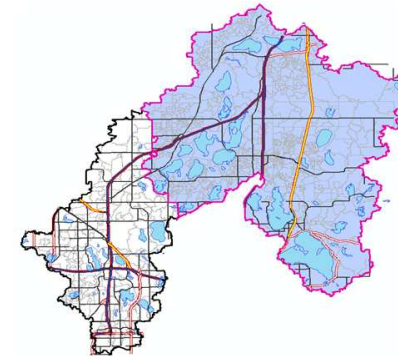
Rice Creek Watershed District

Hydrologic and hydraulic model output from District-Wide modeling program 2010. For supplemental information please see the respective model submittal package.

Rice Creek

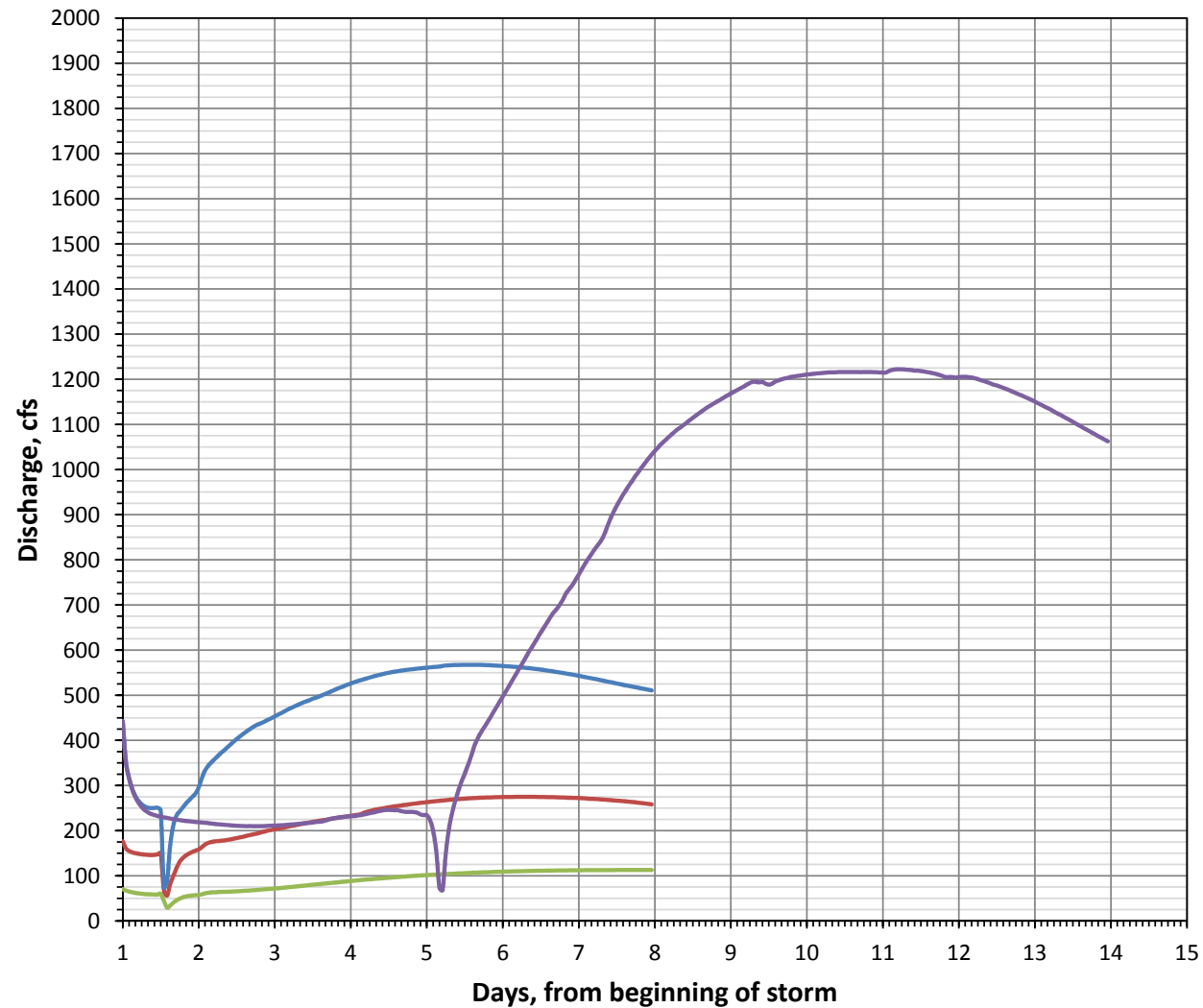
at Baldwin Lake Outlet

Total Drainage Area - 130.1 sq. miles



Legend

- 2-yr, 24-hr rainfall event
- 10-yr, 24-hr rainfall event
- 100-yr, 24-hr rainfall event
- 100-yr, 10-day runoff event



Synthetic Event Discharge Hydrographs Tributary Inflows and Lake Outflow 100-year 24-hr rainfall event



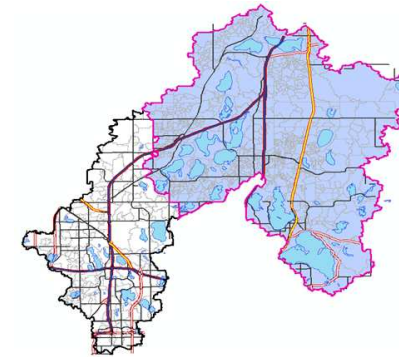
Rice Creek Watershed District

Hydrologic and hydraulic model output
from District-Wide modeling program 2010.
For supplemental information please see
the respective model submittal package.

Rice Creek

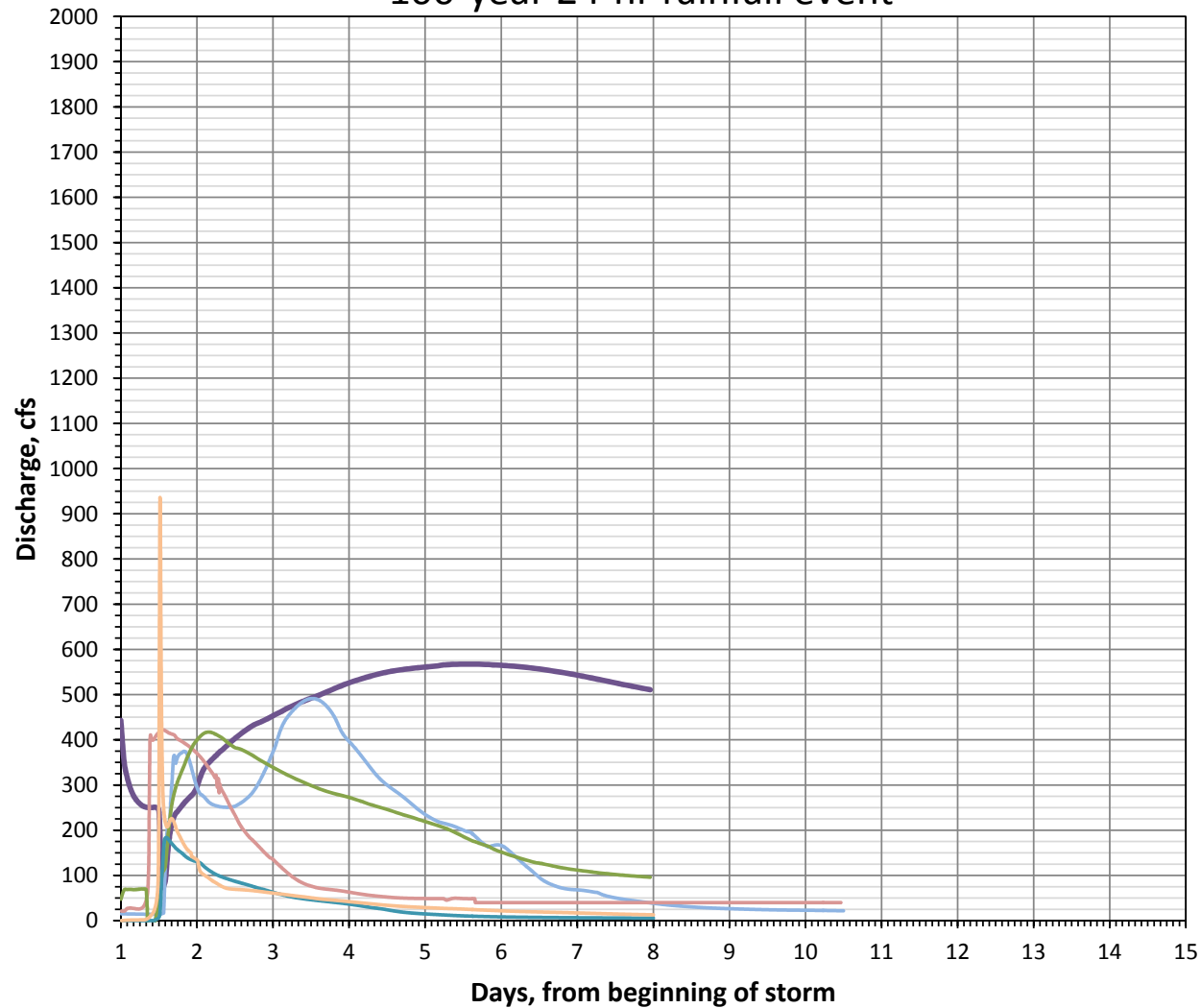
at Baldwin Lake Outlet

Total Drainage Area - 130.1 sq. miles



Legend

- Baldwin Lake Outflow
- Hardwood Creek Inflow
- Clearwater Creek Inflow
- Upper Rice Creek Inflow
- ACD10-22-32 Inflow
- ACD25 Inflow



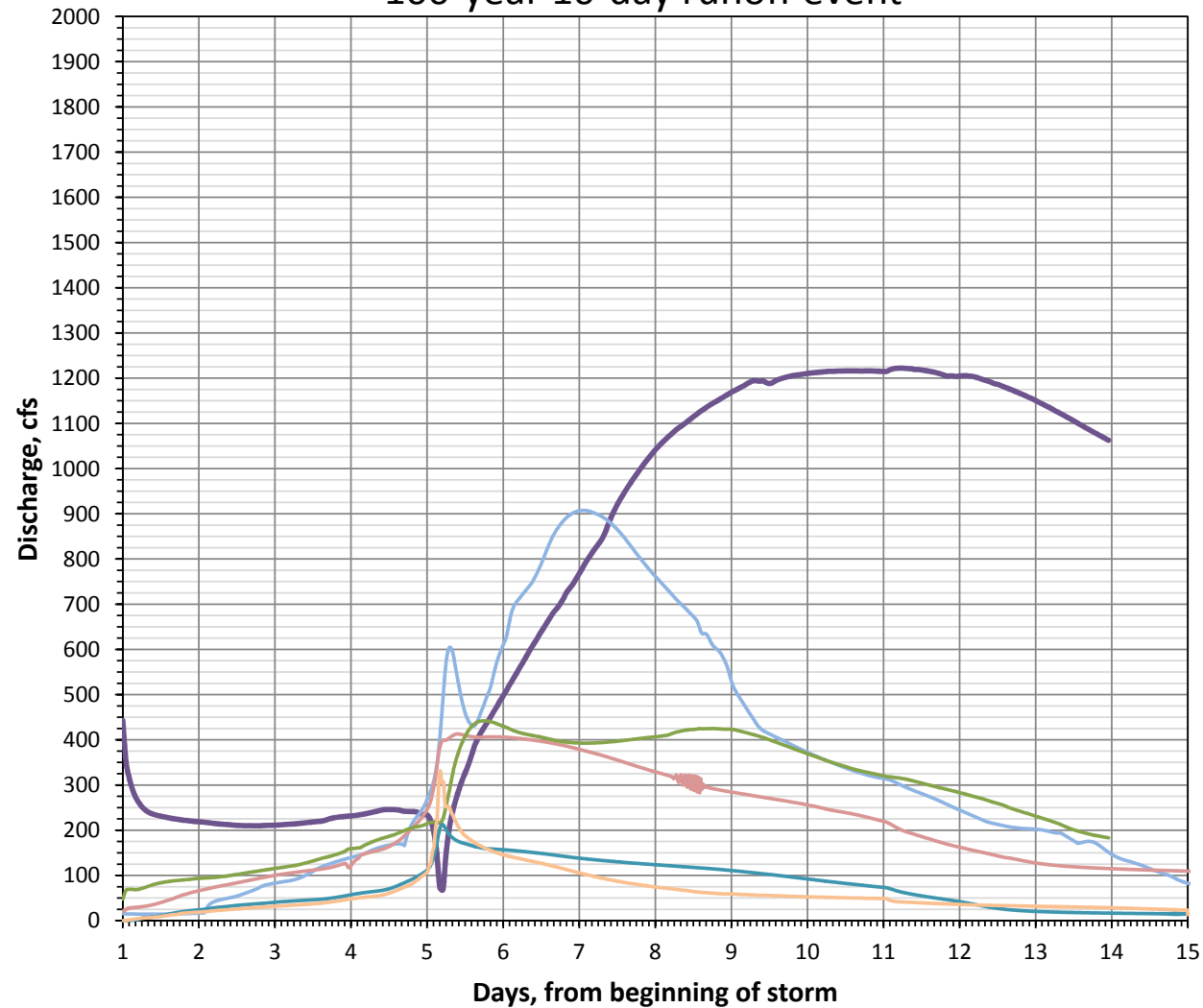
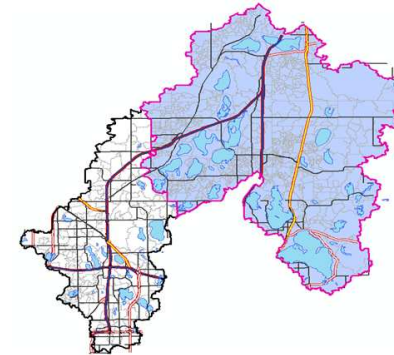
Synthetic Event Discharge Hydrographs Tributary Inflows and Lake Outflow 100-year 10-day runoff event



Rice Creek Watershed District
Hydrologic and hydraulic model output
from District-Wide modeling program 2010.
For supplemental information please see
the respective model submittal package.

Rice Creek
at Baldwin Lake Outlet

Total Drainage Area - 130.1 sq. miles



Legend

- Baldwin Lake Outflow
- Hardwood Creek Inflow
- Clearwater Creek Inflow
- Upper Rice Creek Inflow
- ACD10-22-32 Inflow
- ACD25 Inflow