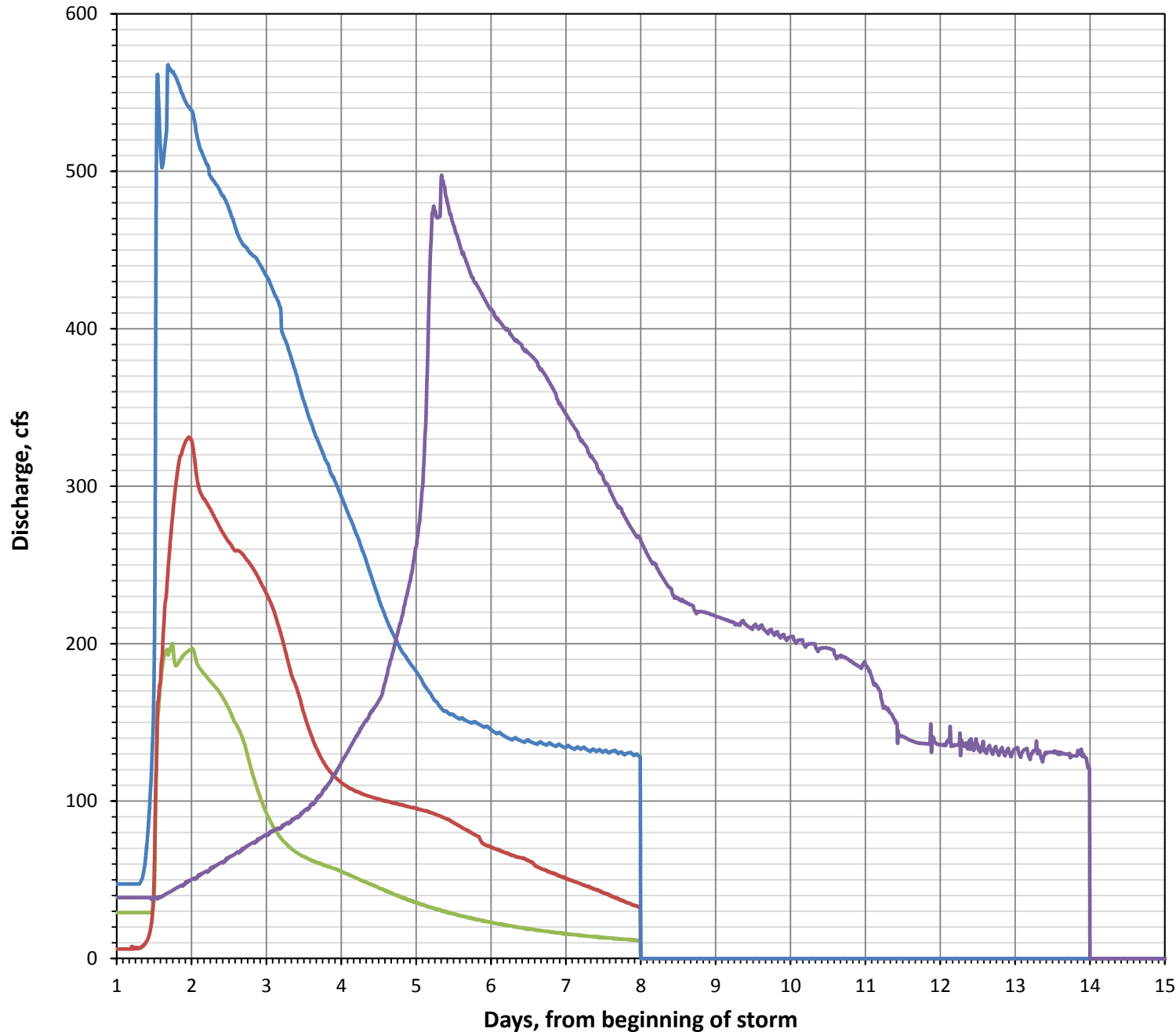


Synthetic Event Discharge Hydrographs



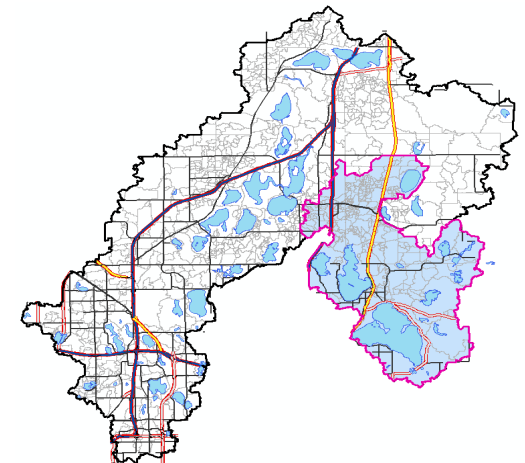
Rice Creek Watershed District

Hydrologic and hydraulic model output from District-Wide modeling program 2010. For supplemental information please see the respective model submittal package.

Ramsy County Ditches 2, 3, 4 & 5

near Main Street/CSAH 14 in Centerville

Total Drainage Area - 43.4 sq. miles



Legend

- 2-year, 24-hr rainfall event
- 10-year, 24-hr rainfall event
- 100-year, 24-hr rainfall event
- 100-year, 10-day runoff event